

■ **NUOVA TRIANGOLAZIONE**  
Sezione: Sez.012  
Scala V: 1 : 100  
Scala H: 1 : 100  
Quota Base: 40.0 m

Nome Punto	Quota	Distanza Parz.	Distanza Prog.
SP001	0.00	1.94	0.00
SP002	45.05	1.94	1.94
SP006	45.93	0.64	15.01
SP009	44.44	15.65	15.65
SP10	41.58	13.82	22.27
SP11	41.55	1.25	23.52
SP12	41.51	2.89	26.51
SP13	40.21	0.89	27.40
SP14	40.21	0.89	28.29
SP15	40.14	0.89	29.18
SP16	40.07	1.35	28.73
SP17	38.45	0.52	29.24
SP18	38.00	0.59	29.81
SP19	38.09	0.59	30.40
SP20	38.00	0.59	31.00
SP21	38.00	0.59	31.59
SP22	37.88	0.59	32.18
SP23	37.13	1.65	33.80
SP24	37.13	0.84	34.64
SP25	40.00	0.00	34.64

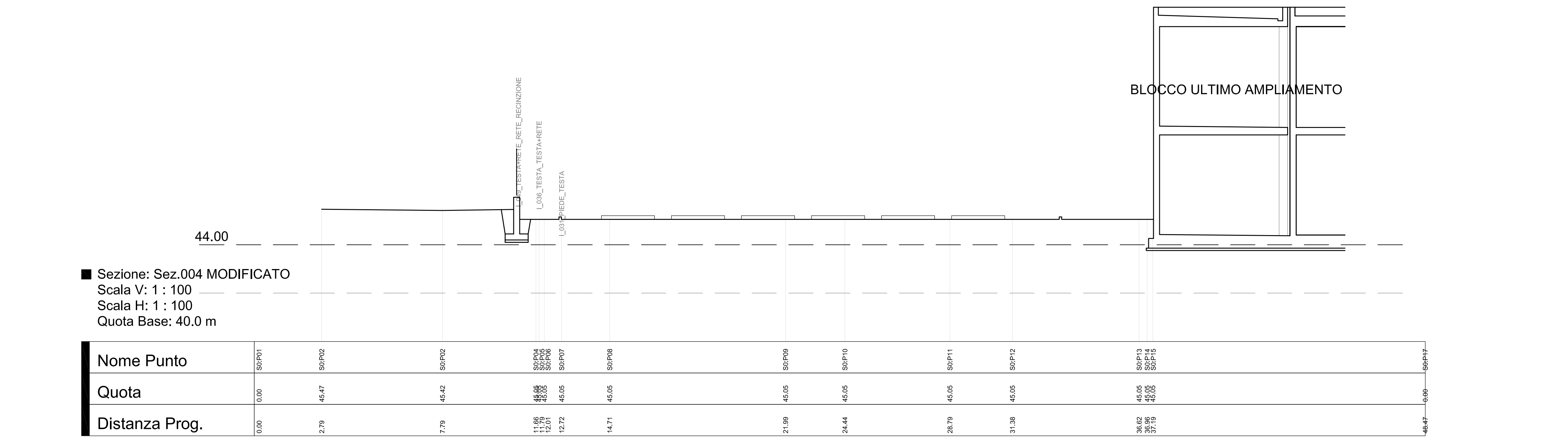
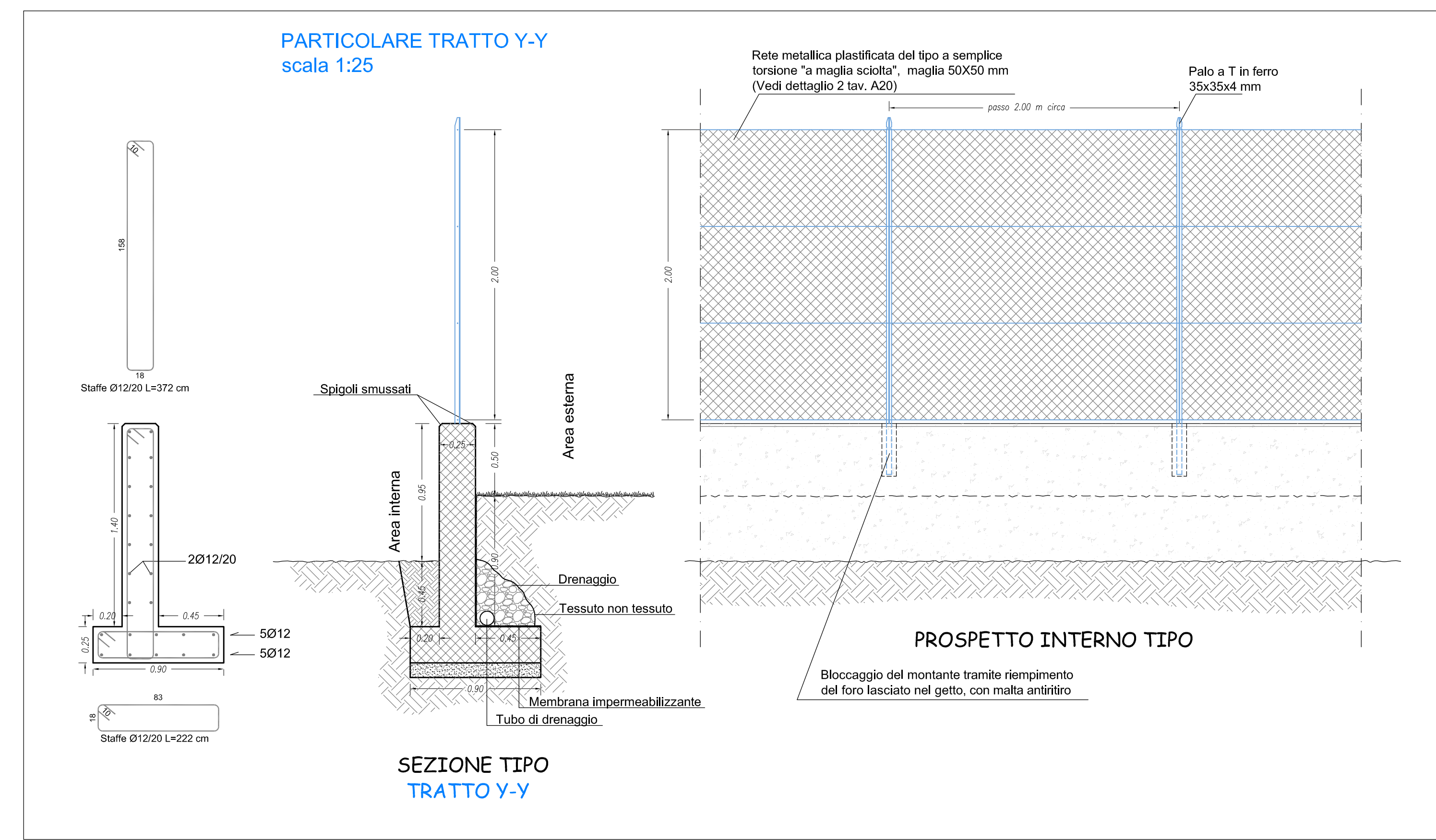
SEZIONE 12 1:100



■ **NUOVA TRIANGOLAZIONE**  
Sezione: Sez.013  
Scala V: 1 : 100  
Scala H: 1 : 100  
Quota Base: 40.0 m

Nome Punto	Quota	Distanza Parz.	Distanza Prog.
SP001	0.00	11.47	0.00
SP007	44.40	11.47	11.47
SP008	45.05	14.84	14.84
SP009	45.05	4.08	18.92
SP10	42.05	0.32	19.25
SP11	42.05	3.51	22.76
SP12	42.45	1.62	23.79
SP13	41.66	0.82	24.70
SP14	41.63	2.84	27.55
SP15	41.57	1.21	28.76
SP16	40.21	0.89	29.65
SP17	40.21	0.89	30.54
SP18	40.04	1.16	31.70
SP19	40.04	0.81	32.51
SP20	38.45	0.36	32.87
SP21	38.45	0.36	33.23
SP22	38.00	0.36	33.59
SP23	38.00	0.36	34.00
SP24	38.00	0.36	34.36
SP25	38.00	0.36	34.72
SP26	38.00	0.36	35.08
SP27	38.00	0.36	35.44
SP28	38.00	0.36	35.80
SP29	38.00	0.36	36.16
SP30	38.00	0.36	36.52
SP31	37.11	0.89	37.41
SP32	37.05	0.89	38.30
SP33	36.96	0.89	39.19
SP34	36.96	0.89	40.08
SP35	36.96	0.89	40.97
SP36	36.96	0.89	41.86
SP37	36.96	0.89	42.75
SP38	36.96	0.89	43.64
SP39	36.96	0.89	44.53
SP40	36.96	0.89	45.42
SP41	36.96	0.89	46.31
SP42	36.96	0.89	47.20
SP43	36.96	0.89	48.09
SP44	36.96	0.89	48.98
SP45	36.96	0.89	49.87
SP46	36.96	0.89	50.76
SP47	36.96	0.89	51.65
SP48	36.96	0.89	52.54
SP49	36.96	0.89	53.43
SP50	36.96	0.89	54.32
SP51	36.96	0.89	55.21
SP52	36.96	0.89	56.10
SP53	36.96	0.89	56.99
SP54	36.96	0.89	57.88
SP55	36.96	0.89	58.77
SP56	36.96	0.89	59.66
SP57	36.96	0.89	60.55
SP58	36.96	0.89	61.44
SP59	36.96	0.89	62.33
SP60	36.96	0.89	63.22
SP61	36.96	0.89	64.11
SP62	36.96	0.89	65.00
SP63	36.96	0.89	65.89
SP64	36.96	0.89	66.78
SP65	36.96	0.89	67.67
SP66	36.96	0.89	68.56
SP67	36.96	0.89	69.45
SP68	36.96	0.89	70.34
SP69	36.96	0.89	71.23
SP70	36.96	0.89	72.12
SP71	36.96	0.89	73.01
SP72	36.96	0.89	73.90
SP73	36.96	0.89	74.79
SP74	36.96	0.89	75.68
SP75	36.96	0.89	76.57
SP76	36.96	0.89	77.46
SP77	36.96	0.89	78.35
SP78	36.96	0.89	79.24
SP79	36.96	0.89	80.13
SP80	36.96	0.89	81.02
SP81	36.96	0.89	81.91
SP82	36.96	0.89	82.80
SP83	36.96	0.89	83.69
SP84	36.96	0.89	84.58
SP85	36.96	0.89	85.47
SP86	36.96	0.89	86.36
SP87	36.96	0.89	87.25
SP88	36.96	0.89	88.14
SP89	36.96	0.89	89.03
SP90	36.96	0.89	89.92

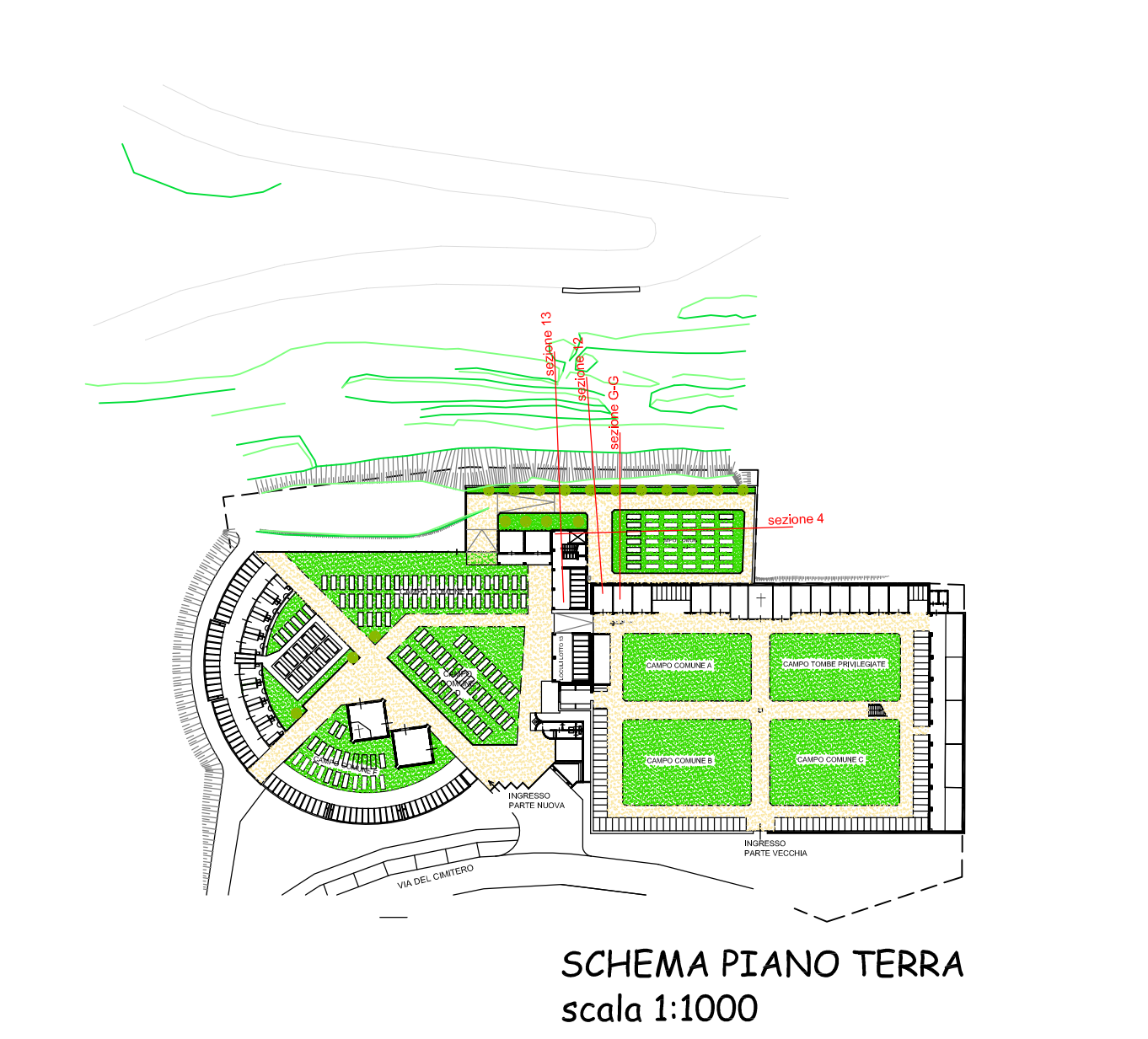
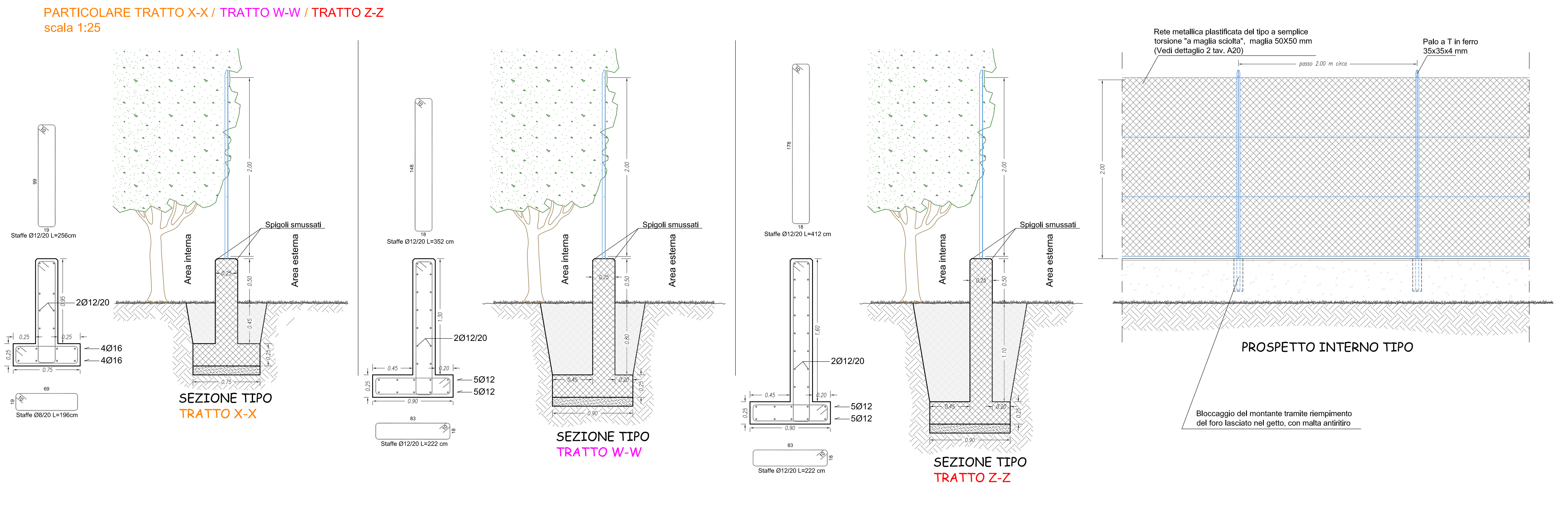
SEZIONE 13 1:100



■ **Sezione: Sez.004 MODIFICATO**  
Scala V: 1 : 100  
Scala H: 1 : 100  
Quota Base: 40.0 m

Nome Punto	Quota	Distanza Prog.
SP001	0.00	0.00
SP002	45.47	2.79
SP006	45.42	7.79
SP009	45.05	11.99
SP010	45.05	12.21
SP011	45.05	12.74
SP012	45.05	14.71
SP013	45.05	21.79
SP014	45.05	24.44
SP015	45.05	26.79
SP016	45.05	31.38
SP017	45.05	36.62
SP018	45.05	37.15
SP019	45.05	40.47
SP020	45.05	46.47

SEZIONE 4 1:100



SCHEMA PIANO TERRA  
scala 1:1000